



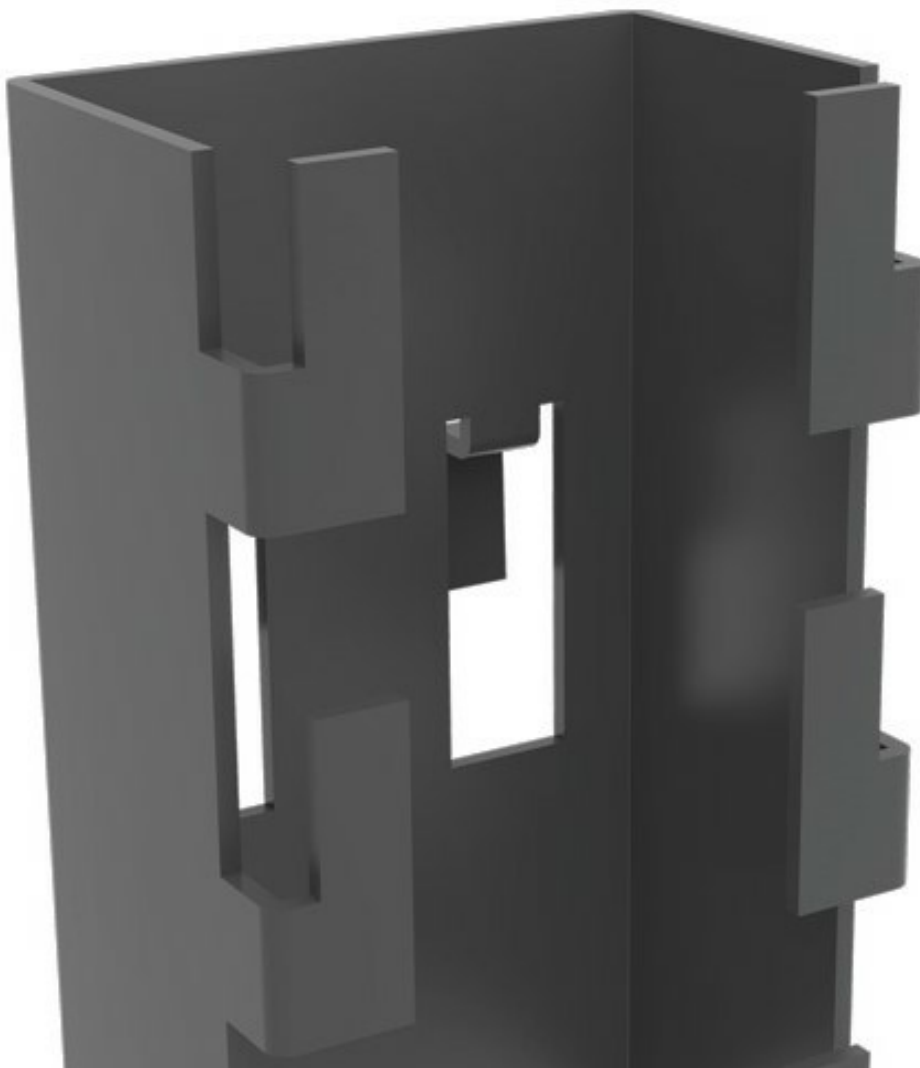
**AXELEN**

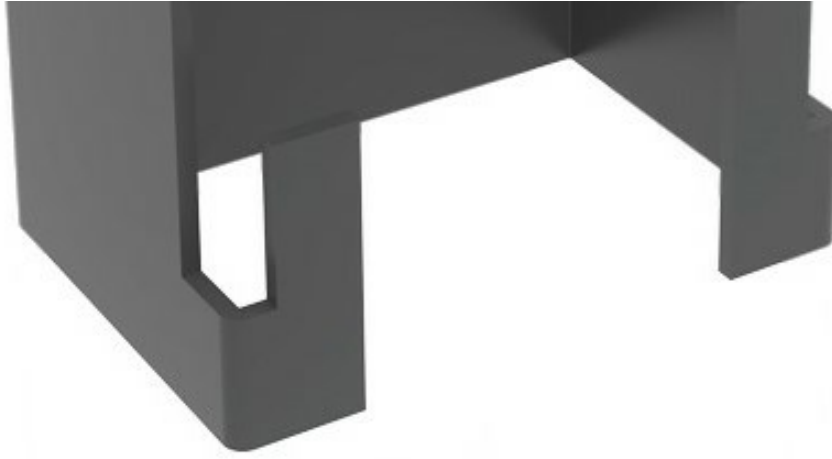
Est 1990

# Mesh Panel Bracket

Axelent offers several mounting possibilities, of which Bracket Mounting, Top Mounting and Keyhole Mounting are the most common. All mountings are quick and easy to assemble.

The mesh panel bracket enables vertical cable runs through the middle of the mesh panels. Brackets, Pendants and X10 Brackets enable optional placement on machines, walls, ceilings and floors.





## Models

---

ARTICLES / DESCRIPTION	SURFACE TREATMENT	
	<b>7700-084</b> Mesh Panel Mini Bracket	Black Zink
	<b>7700-090</b> Mesh Panel Bracket	Black Zink

